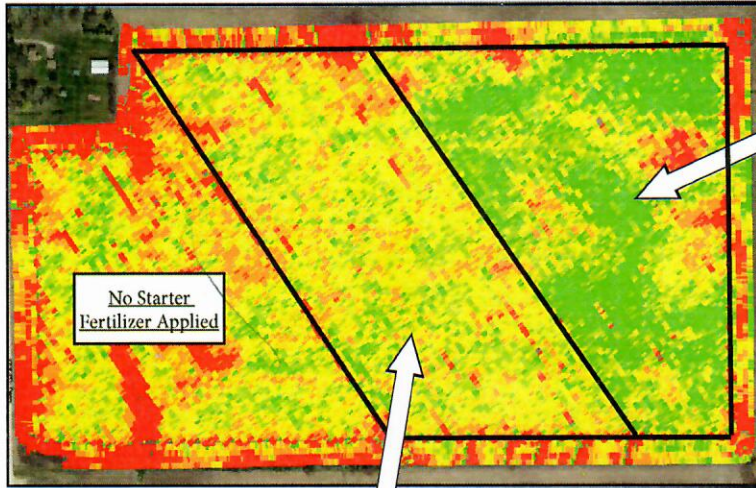


# Foster<sup>TM</sup> FC

## Fertilizer Catalyst

MICROBES THAT MAXIMIZE NUTRIENT AVAILABILITY AND UPTAKE

### Southern MN - FARM A



**Foster<sup>TM</sup> FC** : 4 grams/A  
 Fertilizer Catalyst  
 +  
 P Max Plus: 3 gal/A  
**221.1 bu/A**

**+27.7 bu/A**

- Planting Date: May 16th
- Moderate/High soil fertility levels
- Headlands (80ft.) not treated
- Corn on soybean rotation

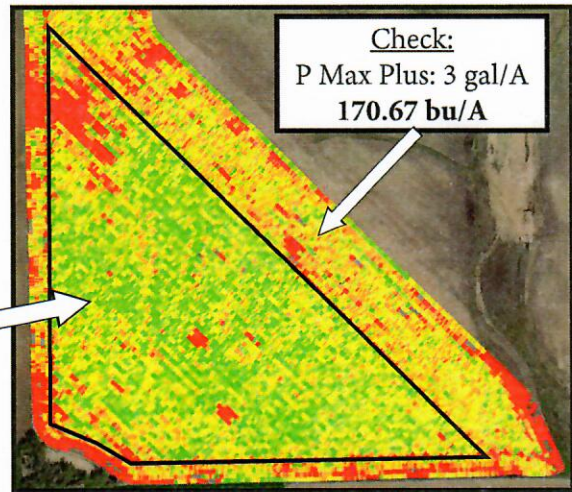
Check:  
 P Max Plus: 3 gal/A  
**193.44 bu/A**

### Southern MN - FARM B

- Planting Date: June 2nd
- Moderate/High soil fertility levels
- Headlands (80ft.) not treated
- Corn on corn rotation

**Foster<sup>TM</sup> FC** : 4 grams/A  
 Fertilizer Catalyst  
 +  
 P Max Plus: 3 gal/A  
**190.65 bu/A**

**+20 bu/A**



Check:  
 P Max Plus: 3 gal/A  
**170.67 bu/A**

*“Shocked that it would show that huge on late planting. There won’t be any side-by-side trials on the farm next year, it will be treated with Foster FC fencerow to fencerow!” - Grower*